

# **LANDSLIP AND EROSION CONTROL USING VETIVER GRASS TECHNOLOGY**

***Dr. P.K YOON***  
***KUALA LUMPUR, MALAYSIA***

**(Part 1)**

# INTRODUCTION

**Dr. P.K. Yoon was a founding Board Director of The Vetiver Network International. His extensive and basic researches on Vetiver Morphology, Physiology and Propagation are fundamental to the success of the Vetiver System today.**

**[http://www.vetiver.org/MAL\\_PK.Yoon%20Look%20see/START.HTM](http://www.vetiver.org/MAL_PK.Yoon%20Look%20see/START.HTM)**

**In addition Dr. Yoon R&D on Vetiver grass application for steep slope stabilisation laid the foundation for its success in Bioengineering around the world today**

**Dr. Yoon was awarded the first King of Thailand and World Bank Vetiver Awards in 1993.**

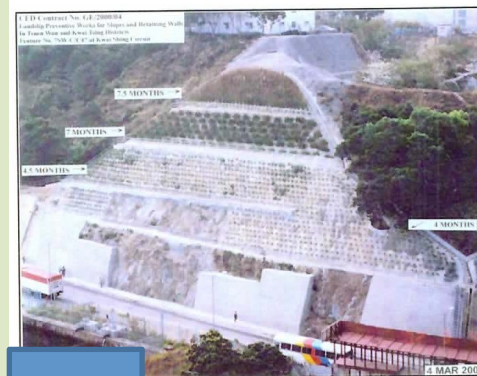
***Dr. Paul Truong***

***TVNI Technical Director and Board Director  
Brisbane, Australia***

**The following pictorial record is Part 1 of Dr. Yoon project in Landslip Preventive Works for Slope and Retaining wall in Hong Kong in 2001- 2002**

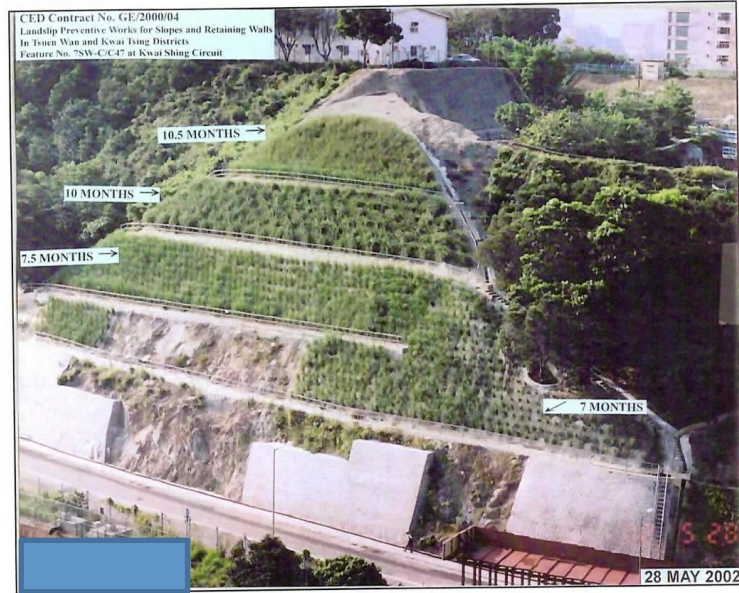
**Part 2 shows migration of Vetiver tillers, nursery and planting material preparation**

**CED Contract No. GE/2000/04**  
**Landslip Preventive Works For Slopes and Retaining Walls**  
**In Tsuen Wan and Kwai Shing Districts**  
**Feature No. 7SW-C/C 47**  
**Kwai Shing Circuit**

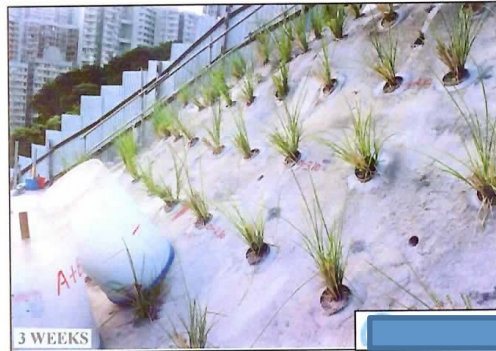




**CED Contract No. GE/2000/04**  
**Landslip Preventive Works For Slopes and Retaining Walls**  
**In Tsuen Wan and Kwai Shing Districts**  
**Feature No. 7SW-C/C 47**  
**Kwai Shing Circuit**

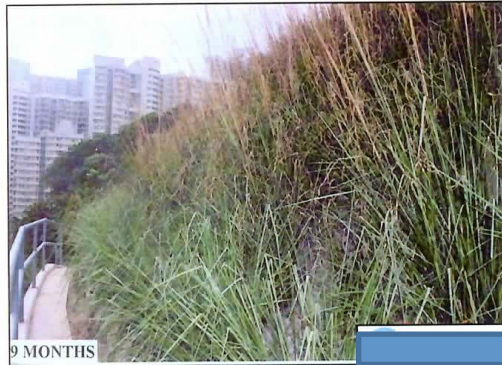
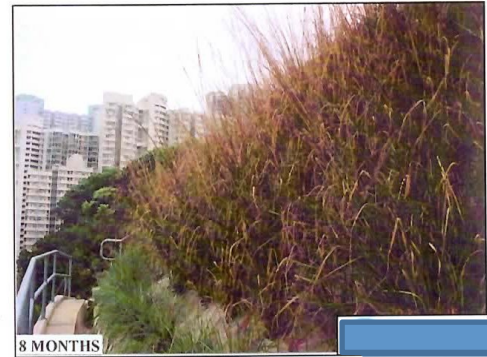


**CED Contract No. GE/2000/04**  
**Landslip Preventive Works For Slopes and Retaining Walls**  
**In Tsuen Wan and Kwai Shing Districts**  
**Feature No. 7SW-C/C 47**  
**Kwai Shing Circuit**





**CED Contract No. GE/2000/04**  
**Landslip Preventive Works For Slopes and Retaining Walls**  
**In Tsuen Wan and Kwai Shing Districts**  
**Feature No. 7SW-C/C 47**  
**Kwai Shing Circuit**





**CED Contract No. GE/2000/04**  
**Landslip Preventive Works for Slopes and Retaining Walls**  
**In Tsuen Wan and Kwai Tsing Districts**  
**Feature No. 7SW-C/C47 at Kwai Shing Circuit**



11.5 MONTHS →

11 MONTHS →

8.5 MONTHS →

← 8 MONTHS

25 JUN 2002



CED Contract No. GE/2000/04  
Landslip Preventive Works for Slopes and Retaining Walls  
In Tsuen Wan and Kwai Tsing Districts  
Feature No. 7SW-C/C47 at Kwai Shing Circuit



12.5 MONTHS →

12 MONTHS →

9.5 MONTHS →

↙ 9 MONTHS

20 JUL 2002



# Planting on the very steep face





# Good quality planting material to ensure success





# One month after planting

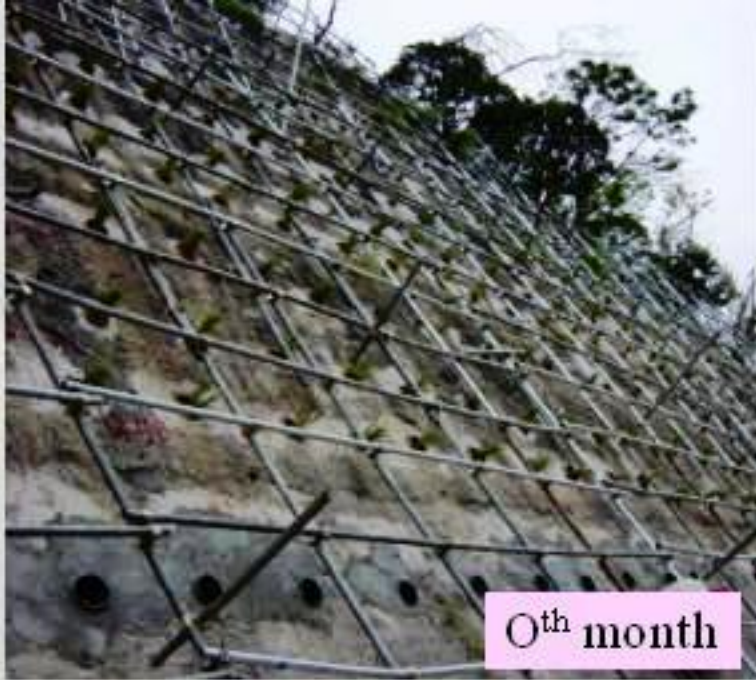




## One month after planting







0<sup>th</sup> month



1<sup>st</sup> month



3<sup>rd</sup> month



2<sup>nd</sup> year



# Highways Department Contract No. 16/HY/1998

## West Lion Rock Tunnel Office

### Feature No. 7SW-D/C 47



Highways Department Contract No. 16/HY/1998  
West Lion Rock Tunnel Office  
Feature No. 7SW-D/C 47



1 MONTH



3 MONTHS



5 MONTHS





Planting in Winter ( 22 FEB 2002 )

4 MONTHS





Planting in Winter ( 22 FEB 2002 )

5 MONTHS









Planting in Winter (22 FEB 2002)

7 MONTHS



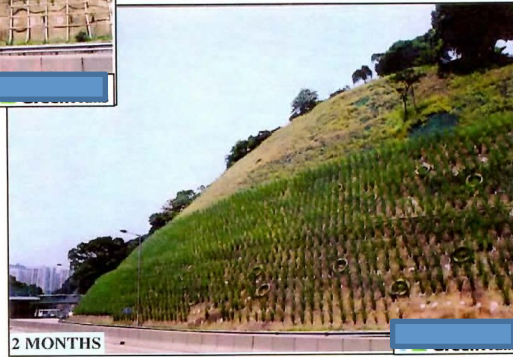
Highways Department Contract No. 16/HY/1998  
Sun Tin Wai Estate  
Feature No. 7SW-D/C 1



Highways Department Contract No. 16/HY/1998  
Sun Tin Wai Estate  
Feature No. 7SW-D/C 1



1 MONTH



2 MONTHS



3 MONTHS



Highways Department Contract No. 16/HY/1998  
Sin Tin Wai Estate  
Feature No. 7SW-D/C1



3 MONTHS



